



AGE FRIENDLY  
MAPLE GROVE

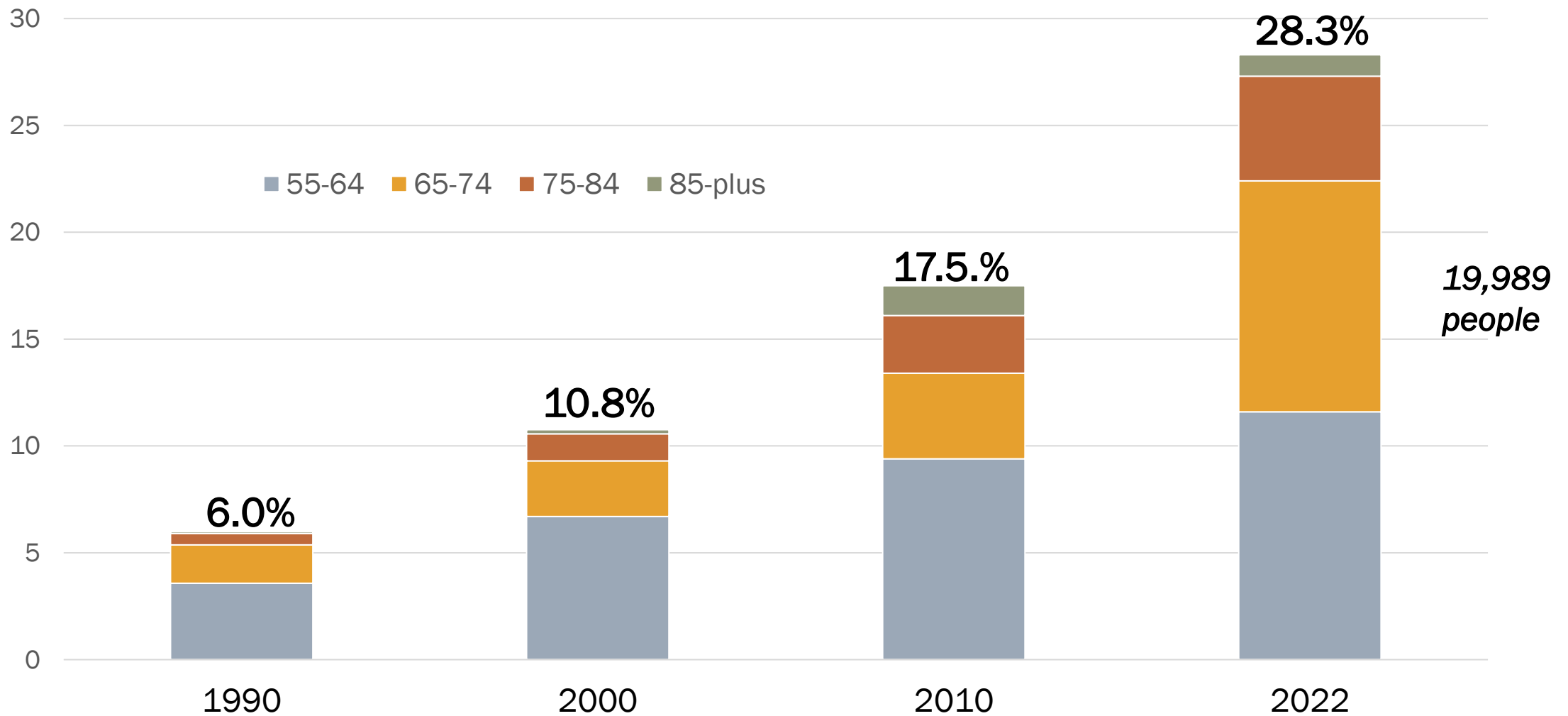
**HOUSING FOR ALL**  
**Virtual Bus tour**

Affordable Housing Update  
OCTOBER 2024

Age-friendly communities are places where age is not a barrier to living well, and where communities make plans and decisions with a “lifespan lens.”

---

# Maple Grove Population Age 55 and Older

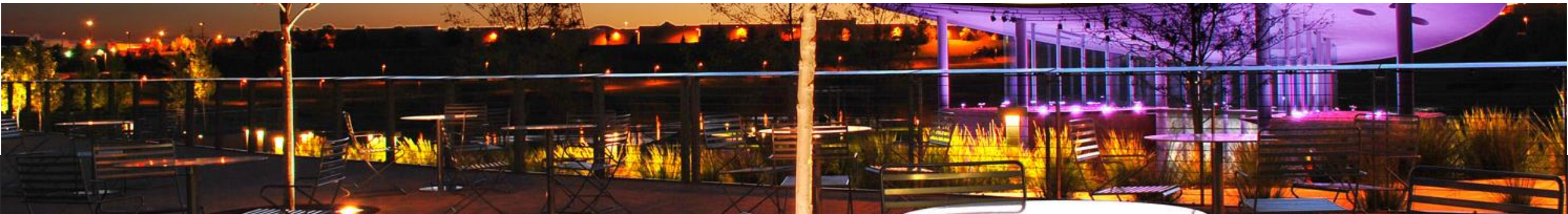


1990: US Census Bureau Decennial Census; 2000: US Census Bureau Decennial Census ; 2010: US Census, 2010 ACS 5-Year Estimates Data Profiles; 2022: ACS 1-Year Estimate Data Profiles

# Who We Are

---

- Community-driven, City-sponsored initiative to make Maple Grove a better place to grow older
- Leadership Team of 15-20 cross-sector professionals and community volunteers
- Member of the WHO/AARP Network of Age-Friendly States and Communities



# AF MG Community Partners

## PARTNERS/FINANCIAL SUPPORT:



## PARTNERS:



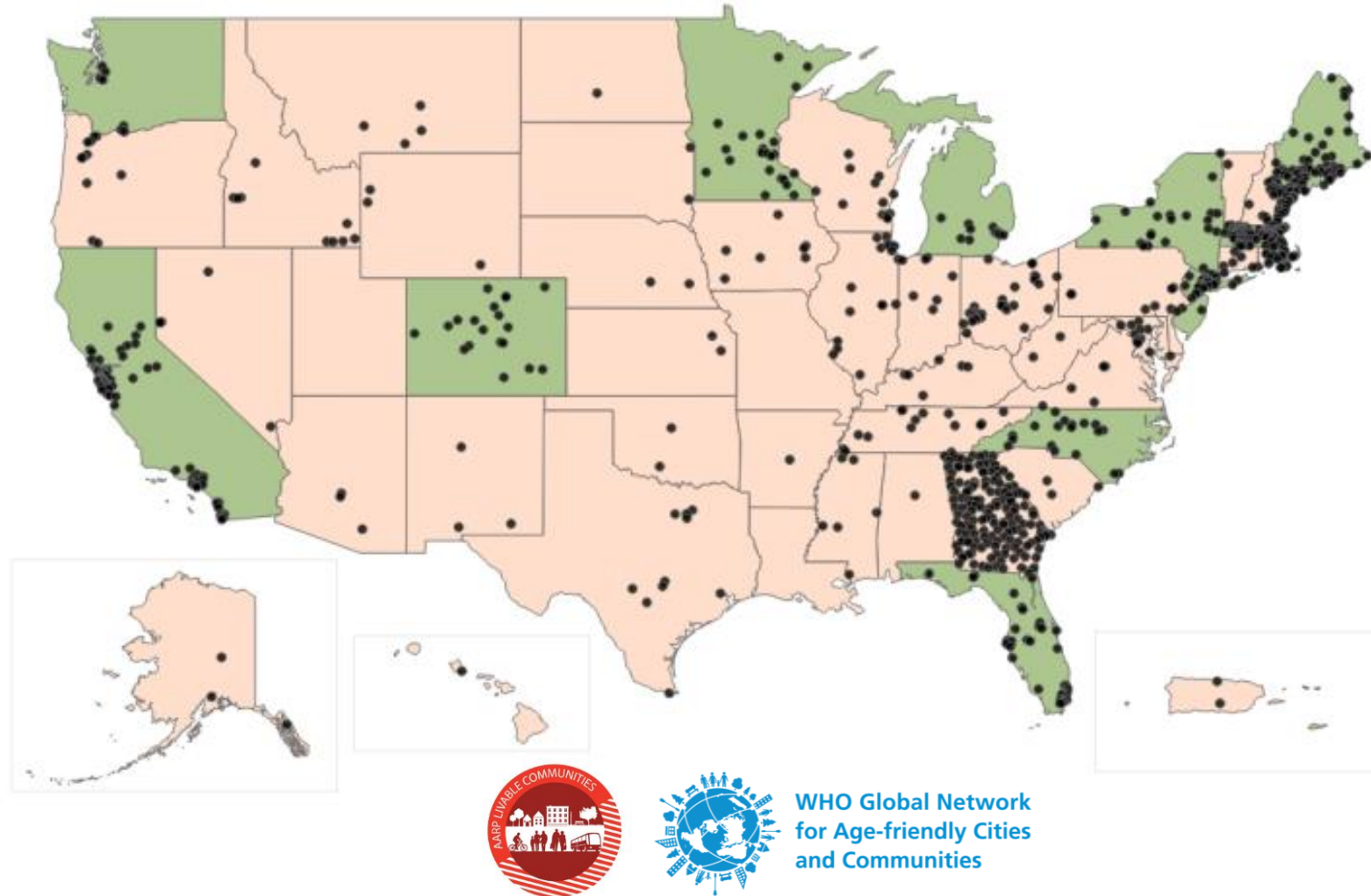
## 25 Minnesota members

- 1) State of MN
- 2) Cook County
- 3) Fillmore County
- 4) Hennepin County
- 5) Lake County
- 6) Olmsted County
- 7) Alexandria
- 8) Bird Island
- 9) Brainerd
- 10) Brooklyn Park
- 11) Duluth
- 12) Lynd
- 13) Maple Grove
- 14) Minneapolis
- 15) Northfield
- 16) Oakdale
- 17) Oronoco
- 18) Pine Island
- 19) Princeton
- 20) St. Cloud
- 21) Virginia
- 22) Wabasha
- 23) West Saint Paul
- 24) Willmar
- 25) Wyoming

## AARP Network of Age-Friendly States & Communities

913 members in the U.S.!

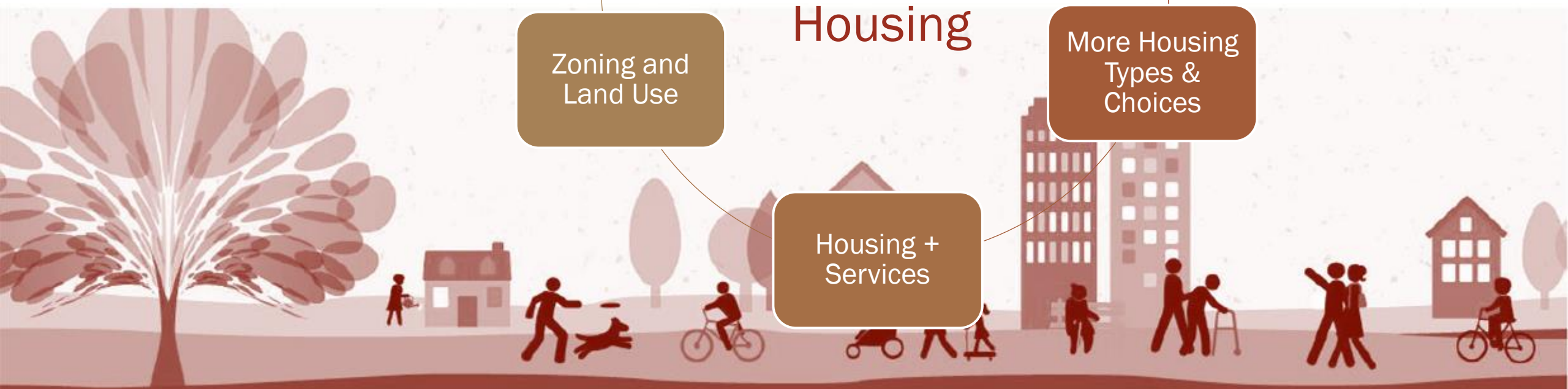
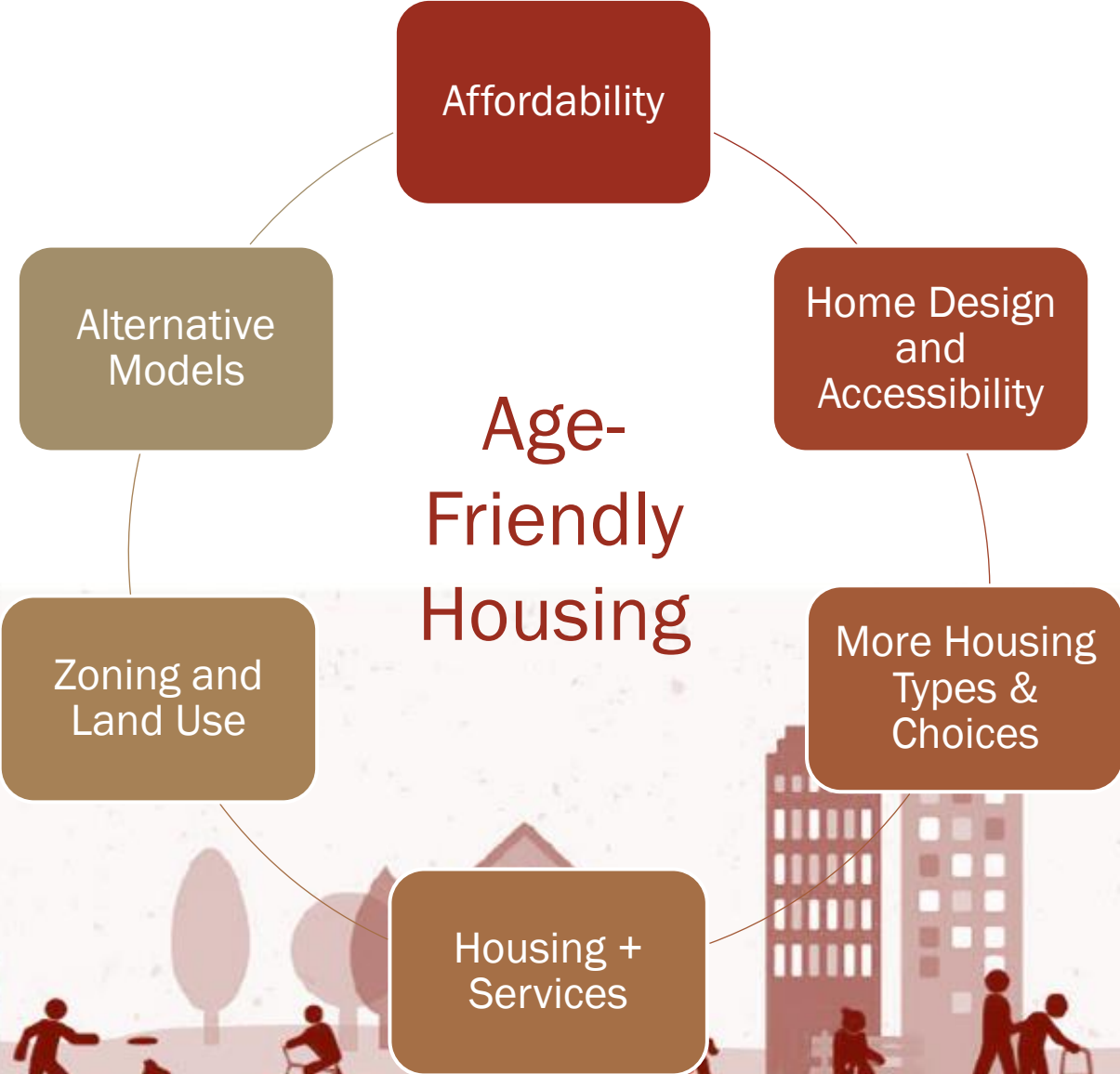
Members commit to making change using the program's framework





- **Governor’s Council on an Age-Friendly MN** established in Dec. 2019
- **Age-friendly legislation** passed in June 2021
- **AFMN Director** hired in June 2022
- **AFMN Grants Program** launched in 2023 – includes support for housing. *Second round of grants in process right now.*
- **Prioritizing diversity, equity, inclusion and accessibility**

# Age-friendly housing: bigger thinking, lifespan lens





# Age-Friendly Maple Grove and Housing

- Add our voice to call for affordable housing
- Partner with City to put a “lifespan lens” on housing decisions
- Educate the community about resources



# Affordable senior housing in Maple Grove: *Transitioning to affordable*

## **Woodland Mounds:** *existing building transitioning to affordable*

- City-owned apartment building (88 units) for people ages 62+
- Historically below market rate
- Official, gradual transition to affordable (Mix of 50% and 30% AMI)



# Affordable senior housing in Maple Grove: *Newly available*

## Garland Commons

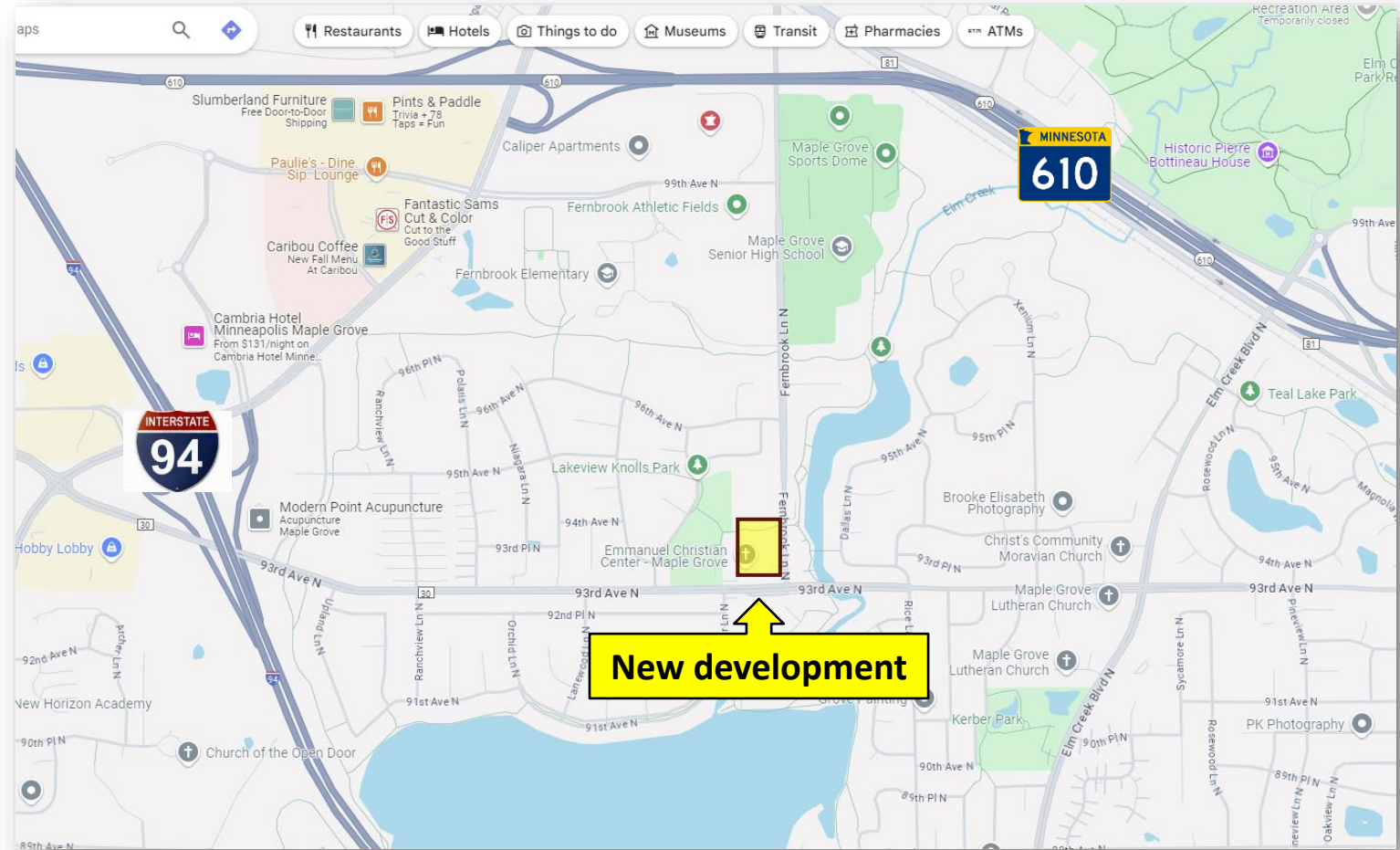
- **Affordability:** Varying levels (50-80% AMI)
- **Units:** 160 units (ages 55+)
- **Status:** Construction complete; first residents moving in
- **Developer:** MWF Properties



# Affordable senior housing in Maple Grove: *In development*

## ***Location: County Road 30 & Fernbrook Lane***

- **Affordability:** No units more than 80% AMI; to include some deeply affordable units (30% AMI)
- **Status:** Preliminary designs being developed; final financing underway
- **Anticipated opening:** 2028
- **Developer:** Ebenezer



AGE-FRIENDLY MAPLE GROVE

# Action Plan

2024-2026



Check out our new  
Action Plan!

[www.agefriendlymaplegrove.org](http://www.agefriendlymaplegrove.org)

# Thank you!

---

Visit [www.agefriendlymaplegrove.org](http://www.agefriendlymaplegrove.org)  
and find us on Facebook

CONTACT:

[info@agefriendlymaplegrove.org](mailto:info@agefriendlymaplegrove.org)

763-494-6524

