

# Age-Friendly Maple Grove KICKOFF & OPEN HOUSE

10 January 2024



**Liz Faust**, Parks and Recreation, City of Maple Grove  
**Lydia Morken**, Morken Consulting



# Welcome!

---

- **Where We've Been:** A little background on Age-Friendly Maple Grove
- **AARP MN recognition of the City of Maple Grove**
- **Where We Are Going:** New Action Plan



# Who We Are

---

- Community-driven, city-sponsored initiative
- Leadership Team of 15-20 cross-sector professionals and community volunteers
- Member of the WHO/AARP Network of Age-Friendly States and Communities



# AF MG Community Partners

## PARTNERS/FINANCIAL SUPPORT:



## PARTNERS:





# Aging: Everybody's doing it!

- Older people make up a greater proportion than ever before.
- Our systems and communities weren't designed for modern aging.
- Major opportunity to reimagine our communities through a “lifespan lens” and create a culture that values aging



An aerial photograph of a city during a winter sunset. The sun is low on the horizon, casting a warm orange glow over the scene. The ground is covered in a layer of snow, and the city's buildings and streets are visible in the distance. The sky is a mix of orange, yellow, and light blue.

But wait, isn't Maple Grove already a  
good city for aging?

**Yes! *And***, there are many ways we can become  
more age-inclusive by putting a “lifespan lens”  
on all aspects of the community.

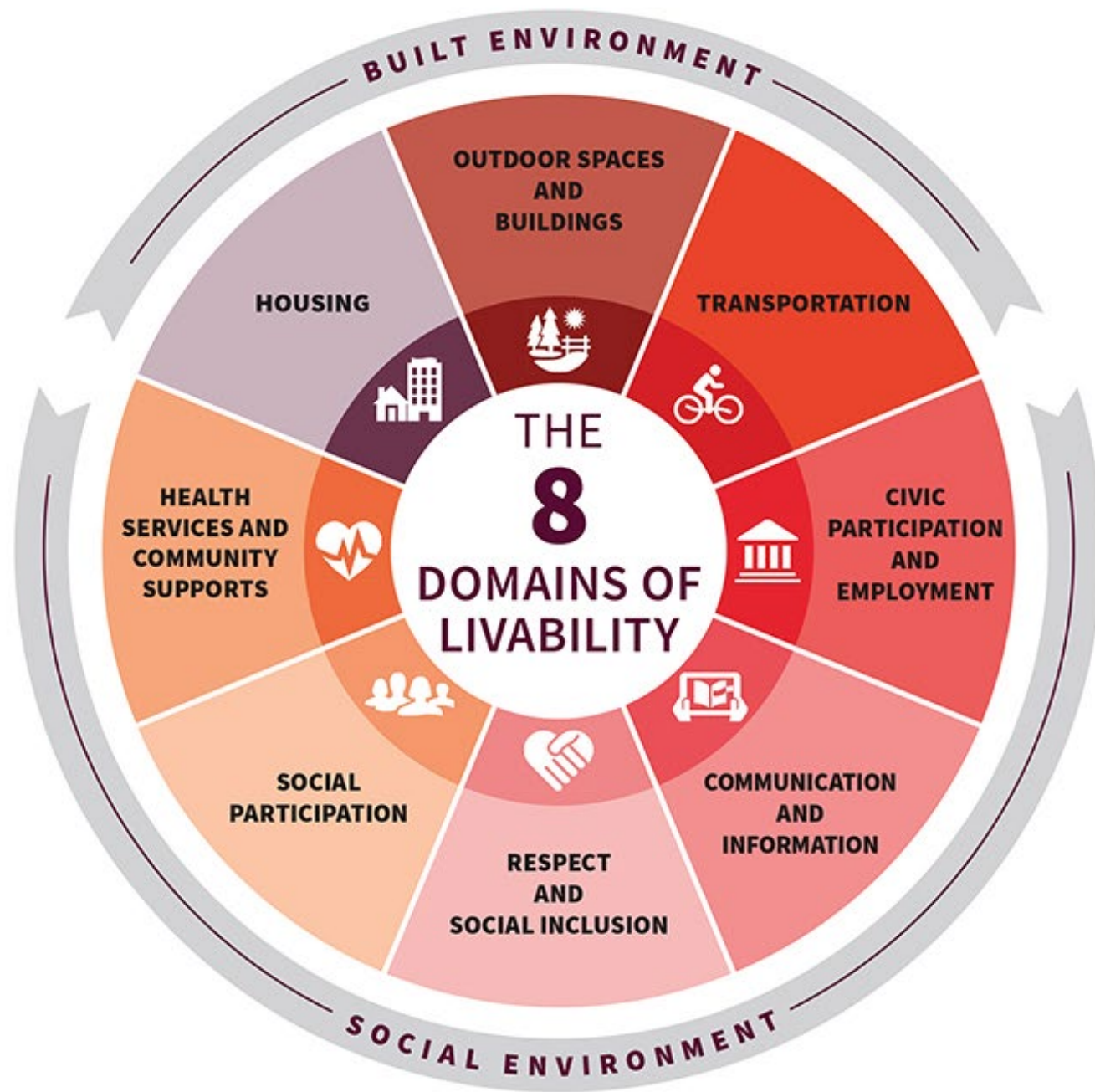


Image: AARP



EXAMPLE:  
Community Center  
redesign

EXAMPLE:  
My Ride

EXAMPLE:  
Woodland Mounds

EXAMPLE:  
CROSS Services  
Let's Do Lunch

EXAMPLE:  
55 Forward  
Programs

EXAMPLE:  
AF MG website

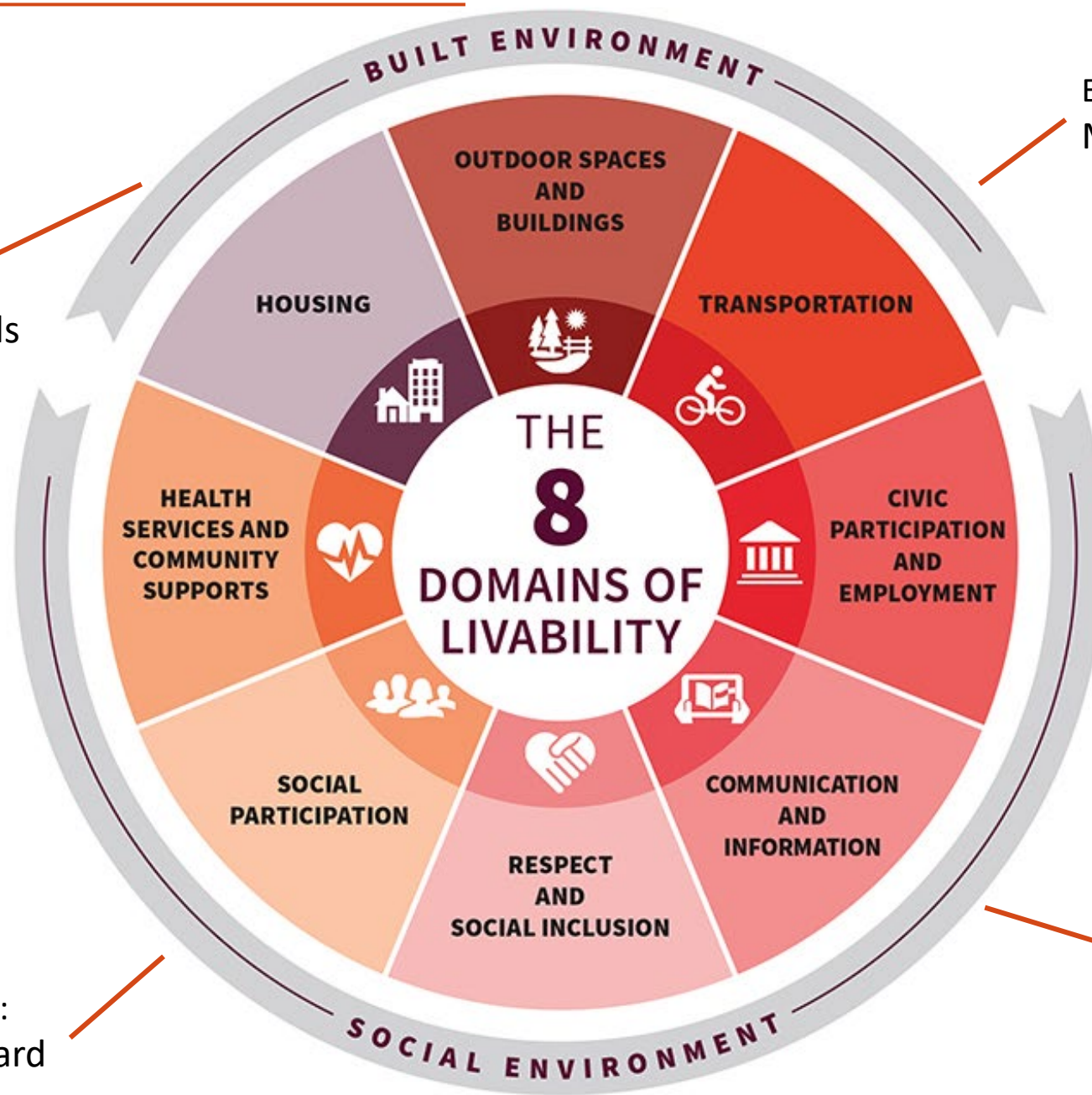


Image: AARP



# 23 Minnesota communities are members of the AARP Network of Age-Friendly States & Communities

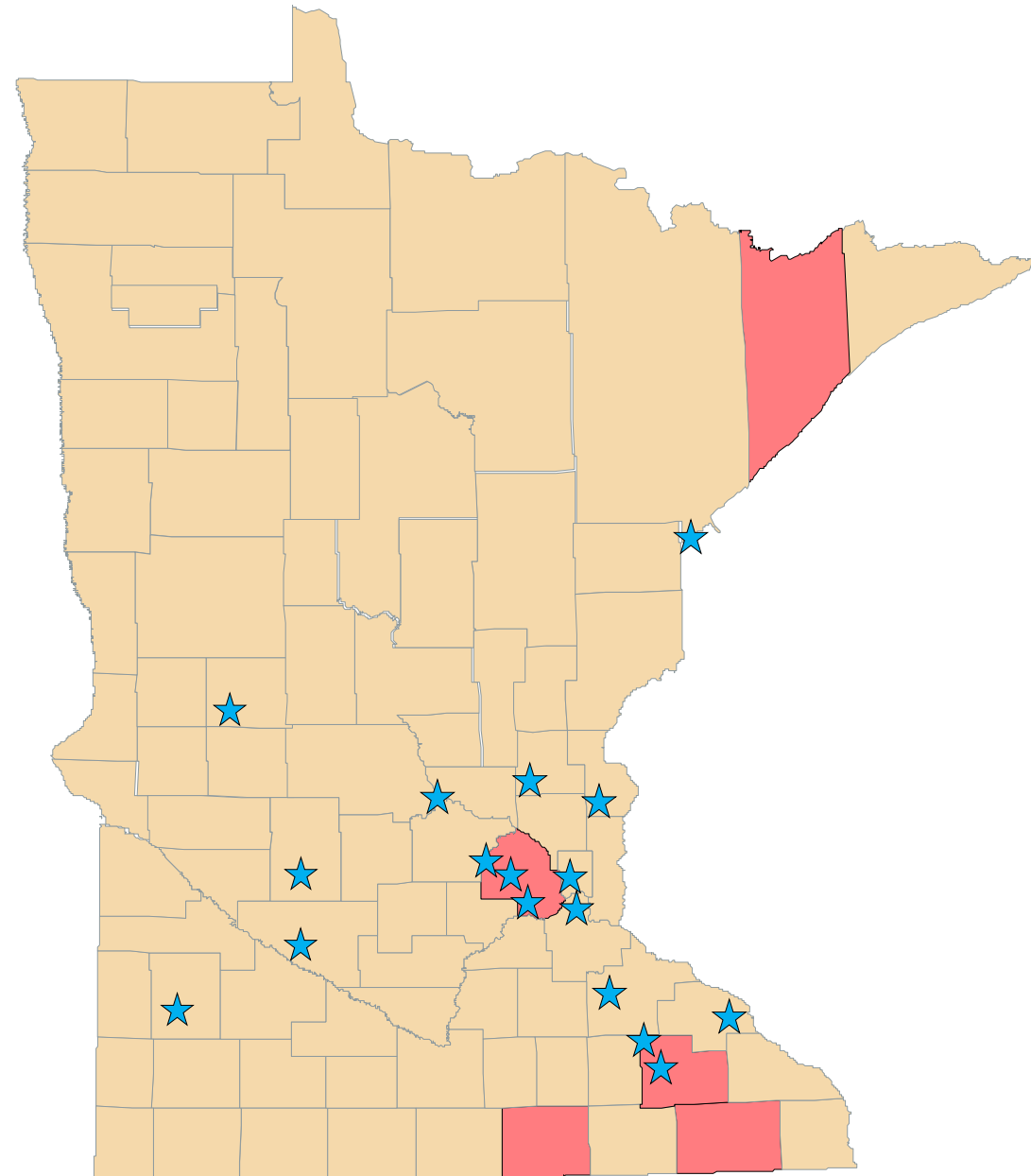
## 5 Counties

- 1) Hennepin County
- 2) Lake County
- 3) Olmsted County
- 4) Fillmore County
- 5) Freeborn County

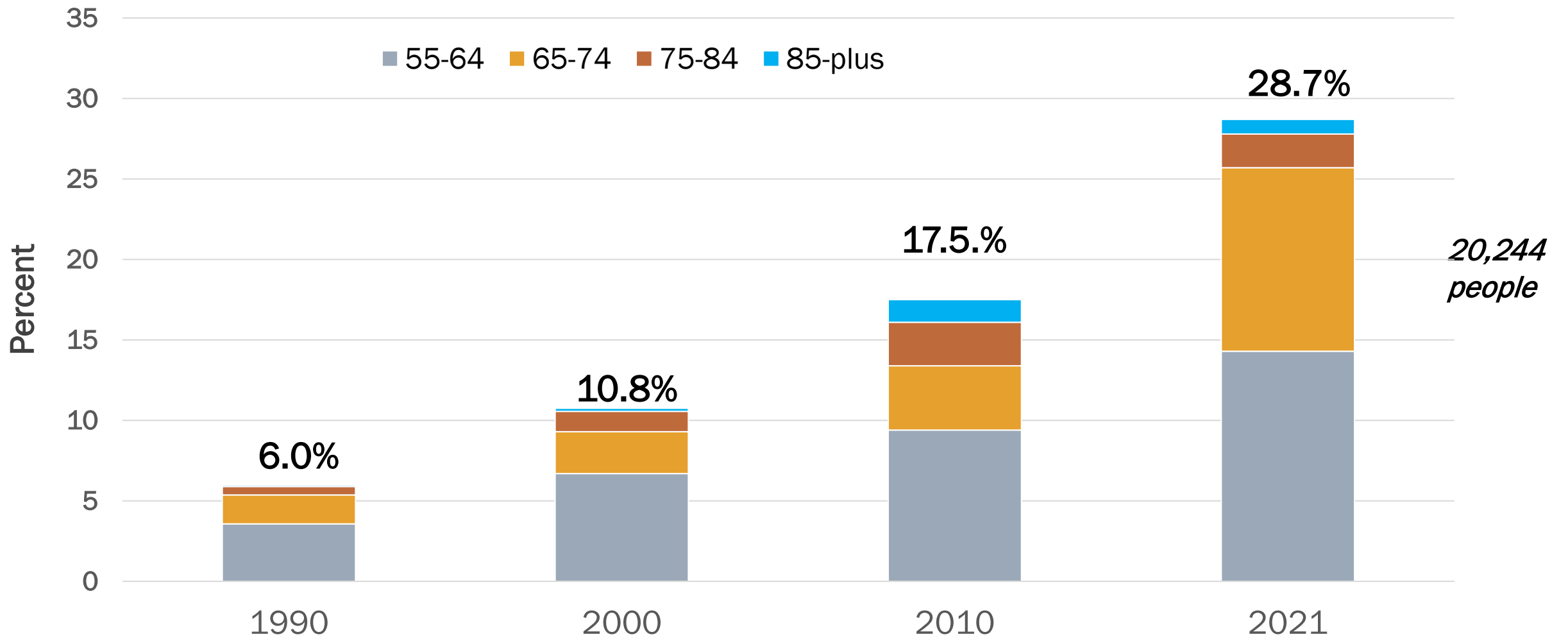
## 17 Cities

- |                       |                     |
|-----------------------|---------------------|
| 1) Alexandria         | 11) Pine Island     |
| 2) Bird Island        | 12) Princeton       |
| 3) Brooklyn Park      | 13) St. Cloud       |
| 4) Duluth             | 14) Wabasha         |
| 5) Lynd               | 15) West Saint Paul |
| 6) <b>Maple Grove</b> | 16) Willmar         |
| 7) Minneapolis        | 17) Wyoming         |
| 8) Northfield         |                     |
| 9) Oakdale            |                     |
| 10) Oronoco           |                     |

..and the State of Minnesota!



# Maple Grove: Growth in 55+ Population, 1990-2021



1990: US Census Bureau Decennial Census; 2000: US Census Bureau Decennial Census ; 2010: US Census, 2010 ACS 5-Year Estimates Data Profiles; 2019: ACS 2017-2021 5-year estimates

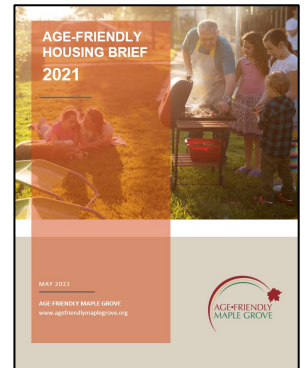
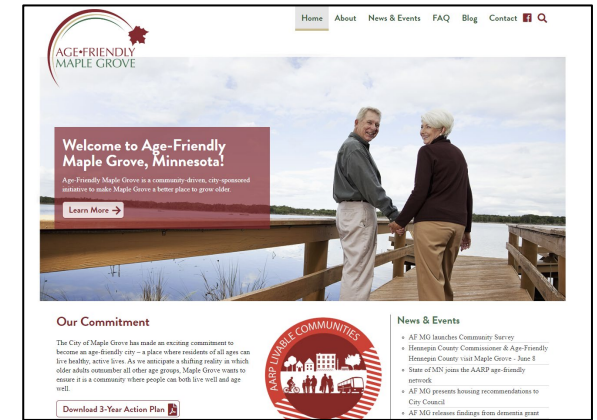
# Roles of Age-Friendly Maple Grove

- Encourages a “**lifespan lens**” on plans, policies and services
- **Creates a forum for multi-sector partners** and community residents to connect on issues & opportunities related to aging.
- **Raises awareness** of services, programs, and other resources available to older residents
- **Promotes the value and richness of later life** and works to dispel negative stereotypes about aging.



# What we've accomplished:

- **Launched AF MG website** – full of local & area resources
- Worked with city to advance **age-friendly housing and transportation**
- Received **dementia grant** to find out how local churches support members with dementia
- Supported partnership between Senior and Teen Centers for city's first **Intergenerational Garden Club**
- Invited to present to **Governor's Council for an Age-Friendly MN**
- Partnered with the city on a **bench audit**
- **Supported city in applying for and being awarded AFMN Grant** for pickleball project at Lakeview Knolls
- **Elevated aging** in the community



Welcome,



An aerial photograph of a modern commercial district at dusk. The scene features several multi-story brick buildings with illuminated signage. On the left, a building displays "REFINED LENDING" and "Barfield PET HOSPITAL". In the center, a "Good Clinic" is visible. On the right, a building has "Husvies & company" and "YOUR WORLD KITCHEN" signs. A central plaza area is paved with brick and has a large circular logo on the ground, which is a red maple leaf on a dark background. The streets are lined with cars, and the overall atmosphere is warm due to the streetlights and building lights.

WHERE WE'RE GOING



AGE-FRIENDLY MAPLE GROVE

# Action Plan

2024-2026



INTRODUCING THE

## Age-Friendly Maple Grove **ACTION PLAN**

- 3 YEARS
- 8 DOMAINS

# How We Developed Our Plan



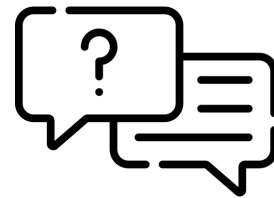
## COMMUNITY SURVEY

*213 responses*  
*8 domains*

What is most important?

## KEY INFORMANT INTERVIEWS

*12 interviewees*  
*Various sectors & organizations*



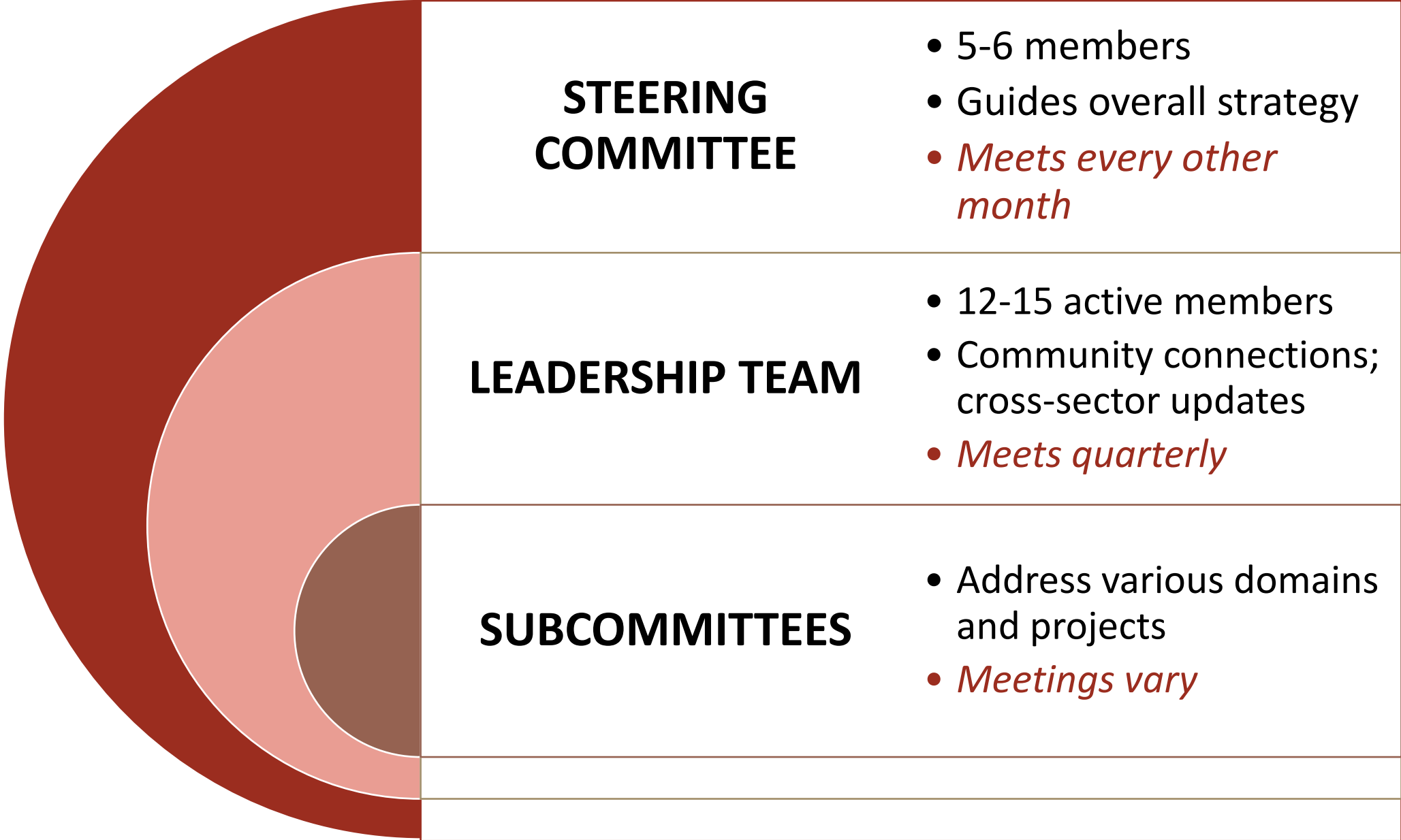
Where can AF MG affect change?



## CITY STAFF ENGAGEMENT

*12 interviews with city staff*  
*Department directors*  
*conversation*

# OUR STRUCTURE



# Get involved, and contribute to our collective future!

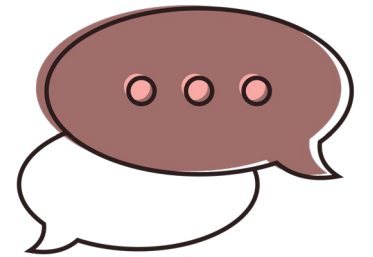


## How?

- Join the Leadership Team (or just attend a meeting!)
- Join a subcommittee to focus on a domain
- Come on board for a specific project

## Interested?

Sign up for our email list to stay connected and learn about an upcoming informational session about opportunities to get involved!



# Thank you for coming!

---

[www.agefriendlymaplegrove.org](http://www.agefriendlymaplegrove.org)

763-494-6514



*Thank you to the City of Maple Grove!*